

# MONTHLY MEMBERSHIP PROGRESS REPORT

District 27 B1

Results as of: 5/31/2020

GMT:

LOCATION WISCONSIN

GMT CA

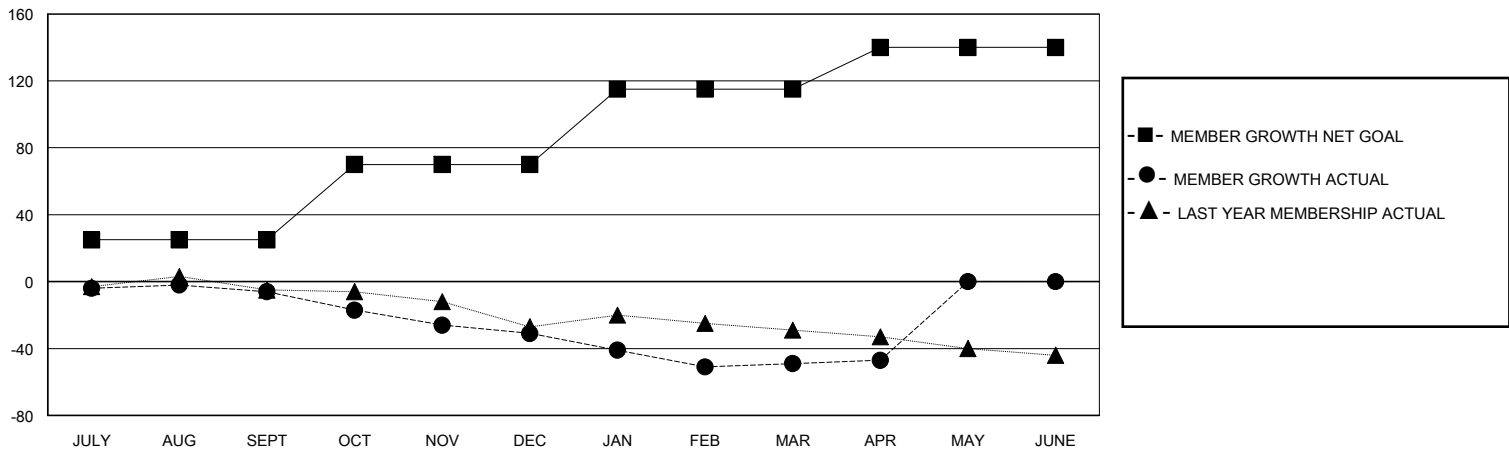
Clubs			
RESULTS FOR 2019-2020			
QUARTER	NEW CLUB GOAL	NEW CLUBS	DROPPED CLUBS
JULY/AUG/SEPT	0	0	0
OCT/NOV/DEC	0	0	0
JAN/FEB/MAR	0	0	2
APR/MAY/JUNE	0	0	0

Members			
RESULTS FOR 2019-2020			
QUARTER	MEMBER GROWTH NET GOAL	MEMBER GROWTH ACTUAL	DROPPED MEMBERS ACTUAL (including transfers)
JULY/AUG/SEPT	25	35	39
OCT/NOV/DEC	45	34	56
JAN/FEB/MAR	45	42	49
APR/MAY/JUNE	25	9	5

GOALS AND ACTUAL NEW CLUBS CUMULATIVE



GOALS AND ACTUAL MEMBERS CUMULATIVE



DROPPED CLUBS: 2	36 CLUBS OF 67 ADDED 1 OR MORE NEW MEMBERS	<b>GENDER DISTRIBUTION</b> MALE 1,456 (76.15%) FEMALE 456 (23.85%)
<b>DROPPED MEMBERS</b> DECEASED 27 CLUB CANCELLED 5 OTHER 117 TOTAL 149	<a href="#">CLICK HERE FOR CUMULATIVE MEMBERSHIP DATA</a>	TOTAL FAMILY UNIT MEMBERS 379 FAMILY MEMBERS PAYING HALF DUES 193